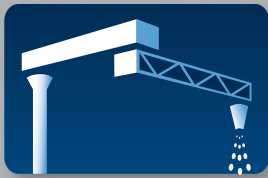


EconoLoader™ - Air Slide Conveyor Design



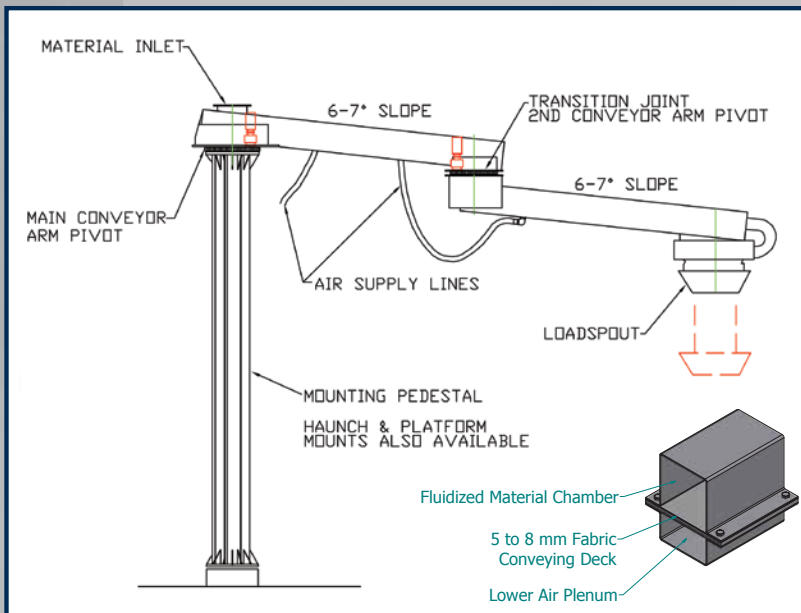
DYNATEK ARTICULATED LOADING SYSTEMS

Air Slide Conveyor-based Loading Systems

DYNATEK's air slide conveyor-based EconoLoader™ uses a 6-7 degree slope and gravity to convey fine powders that have been fluidized with air forced through a porous fabric conveying deck. Carbon steel structural box frames and conveyor housings, abrasion-resistant polyester fabric conveying decks and high quality blowers, form loaders that are rugged, yet versatile enough to handle materials like alumina, hydrated lime, fly ash, plastic powders and semolina. Additionally, air slide-based loaders are fully enclosed, self-cleaning and have no moving parts so they're quiet, dust-free and require almost no maintenance, even when operating at loading rates over 20,000 cubic feet per hour.



Like all DYNATEK loading systems, air slide conveyor-based models feature articulated motion. Two slewing bearing-based pivots, enable both conveyor arms to pivot separately, for nearly 330 degrees of rotation and a reach radius of up to 27 feet. That makes loading fast and convenient because you position the loader, not the truck, railcar or barge being loaded.



EconoLoader™ Specifications

| | |
|------------------------|--|
| Loader Type | Articulated air slide conveyor |
| Construction | Main and secondary conveyor arms consist of air slide conveyors mounted in carbon steel structural box frames. |
| Loader Reach | 22 feet from inlet CL to discharge CL for truck loading. 27 feet from inlet CL to discharge CL for railcar and barge loading. |
| Loading Rate | 8 to 24 inch wide conveyors provide theoretical loading rates up to 26,000 cubic feet / hour. Actual rates are material dependent. |
| Arm Positioning | Hydraulic or electromechanically-driven slewing bearings with capacities between 80,000 and 443,000 ft-lbs, rotate each arm up to 330 degrees horizontally at ½ RPM to provide articulated motion. |
| Load-out | Retractable Loading spouts with 3 to 60 feet of vertical travel, make loading precise and nearly dust-free. |
| Loader Control: | Fully wired NEMA 4 control panel with hand-held control pendant allows a single operator to rotate both conveyor arms, raise / lower the loading spout and start/stop conveyor operation. Control voltage = 120 VAC, 60 HZ, 1 PH Motor voltage = 230 / 460 VAC, 60 HZ, 3 PH (other NEMA-rated enclosures and voltages are available) |
| Finish | White metal sand blast with gray epoxy primer and polyurethane final coat. |

DYNATEK EconoLoader™ loading systems are designed for maximum reliability. Grade and gauge of steel, air slide conveying deck fabric, slewing bearings, pinion gears and drive motors are all carefully selected and the overall design is kept as simple as possible. The result – a loading system with a service life of 25 years or more.

EconoLoader™ - Air Slide Conveyor Design

Loader Moves – Not the Transport Vehicle

Slewing bearings allow both conveyor arms to rotate up to 330 degrees and reach up to 30 ft. This “articulated motion” lets you precisely position the discharge point without having to move the truck, railcar or barge.



Dust Containment & Recovery

Retractable loading spouts with or without dust collection, insure precise, clean loading.



Easy Pendant – based Operation

Operation of the EconoLoader™ couldn't be easier. A NEMA 4, hand-held pendant lets the operator drive the loader to the loading point, lower the loading spout into the hatch and start the loading process.

Design Flexibility

Every DYNATEK EconoLoader™ is custom-engineered for the application so filling special customer requests is easy. Here are some examples:

- Stainless steel box frame and conveyor housing construction
- Air slide conveyor widths > 24 inches
- Loader reach radii > 27 feet
- Post, haunch or platform mounting
- Abrasion-resistant in-feed and discharge transitions
- In-feed control gates
- Special control features and DCS interfaces
- NEMA 7 or 9 control housings

Conveying Rates For Air Slide Conveyor-based EconoLoaders™

| CONVEYOR WIDTH (Inches) | CONVEYING RATE (Cubic Feet / Hour) | CONVEYING RATES (Short Tons / Hour) | | | | |
|----------------------------|---------------------------------------|-------------------------------------|-----|-----|------|------|
| | | Bulk Density (Lbs. / Cubic Foot) | | | | |
| | | 20 | 40 | 60 | 80 | 100 |
| 8 | 2000 | 20 | 40 | 60 | 80 | 100 |
| 10 | 3000 | 30 | 60 | 90 | 120 | 150 |
| 12 | 4500 | 45 | 90 | 135 | 180 | 225 |
| 14 | 6500 | 65 | 130 | 195 | 260 | 325 |
| 16 | 10000 | 100 | 200 | 300 | 400 | 500 |
| 18 | 14500 | 145 | 290 | 435 | 580 | 725 |
| 20 | 20000 | 200 | 400 | 600 | 800 | 1000 |
| 24 | 26000 | 260 | 520 | 780 | 1040 | 1300 |

All conveying rates shown are theoretical. Actual rates are material dependent.

Experienced and Tested

Over the years, DYNATEK has supplied a wide assortment of unique articulated loading solutions to customers like BASF, General Mills, Valero and Nucor Steel. Using screw, belt, drag and air slide conveyor based designs, DYNATEK Loaders are being used throughout the country to load materials like DDGS, calcium carbonate, silica, salt, soy meal, coffee and a host of other materials. So challenge us with your loading requirements, no matter how difficult and find out why so many companies prefer DYNATEK Articulated Loading Systems.



DYNATEK
ARTICULATED LOADING SYSTEMS

P.O. Box 215
200 North Harrison Street
North Prairie, WI 53153 USA

Toll Free: 888.853.5444

Phone: 262.392.2162

Fax: 262.392.2984

Email: info@dynatekloadingsystems.com

Website: www.dynatekloadingsystems.com

A Division of D&D Products, Inc.



Scan this tag with your Smartphone to learn more